

# **Modular & Mobile Solutions**

Activity report 2013 – 2019

By Nowadays Group

## Introduction

- Member at International Humanitarian City since 2013.
- Secured funding to deliver USD\$50million of humanitarian related projects.
- We design Humanitarian focused solutions, connect stakeholders and deliver projects that have a positive social benefit.
- Specialist in the design of Humanitarian focused solutions including refugee communities.
- Delivered tailor made projects for Government charities of Saudi Arabia, Qatar & Kuwait:
  - ✓ Seven purpose built modular housing communities that include social, educational and sports facilities for 40,000 people. Total of 7,000 homes.
  - ✓ Bespoke mobile bakeries, hospitals, emergency surgery units & wash facilities
  - ✓ A world class Childrens Village for 1,000 Syrian children
- Trusted partner of International humanitarian agencies and authorities.

# Childrens village for Children of Syria

Designed & raised funds for a purpose built Children's Village for children of Syria.

Project concept - 2015

Delivered 2017-2018



1,000 kids have home and access to education and social care. 55 x 350m2 villa

55 x 350m2 villas for Boys & Girls.

Schools, mosque, dentist, clinic, sports and recreation facilities.

# Project : Community buildings – design stage.

Community complete with all social amenities



- 350m2 villa for 24 kids



Under construction

IMG\_5670.JPG



510m2 cultural centre



486m2 Kitchen – refectory – laundry



70m2 clinic



870m2 school



400m2 mosque



780m2 Management accommodation

## Childrens village: construction images



Light-steel, high speed modular construction



55 x 350m<sup>2</sup> villas – schools – clinic – dentist – mosque – sports & community facilities – sport

# Completed Buildings



55 x 350m2 villas



Mosque



Bedrooms



Homes complete

# Childrens village project images



School + homes



Football pitch



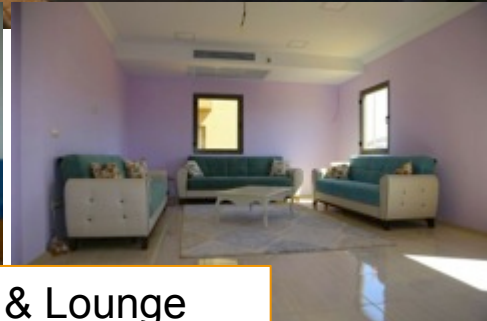
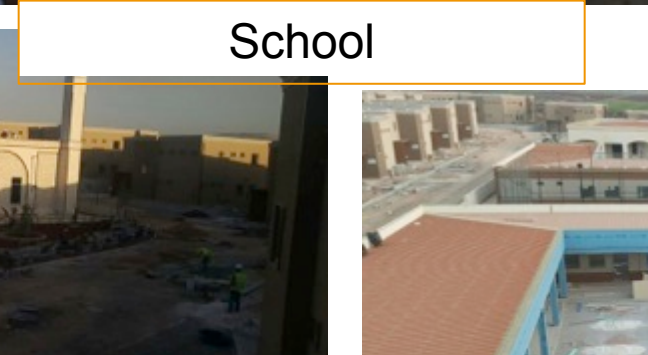
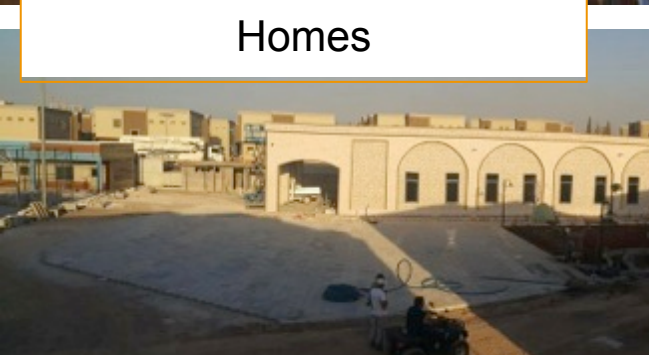
Homes



School



Mosque



Majlis & Lounge



Basketball court

Phase 1 complete 2017

Location – Turkish Syrian border.



## NEWS

[Home](#) | [UK](#) | [World](#) | [Business](#) | [Politics](#) | [Tech](#) | [Science](#) | [Health](#) | [Family & Education](#) | [Entertainment & Arts](#) | [Stories](#) | [More](#) ▾[World](#) | [Africa](#) | [Asia](#) | [Australia](#) | [Europe](#) | [Latin America](#) | [Middle East](#) | [US & Canada](#)

# Syria conflict: Turkey opens 'city' for orphans of the war

🕒 18 May 2017



Syrian civil war



Eighteen children will live in each two-storey villa at Orphans City

## Top Stories

### Two coronavirus cases confirmed in UK

Two members of a family receive specialist care, as Britons return from China on a government flight.

🕒 1 hour ago

### Global coronavirus cases overtake Sars epidemic

🕒 23 minutes ago

### UK set for Brexit, as PM promises 'new dawn'

🕒 1 hour ago

## Features



## 4 x mobile bakeries for people of Syria



Each produce up to 3000 breads per hour – run by 2 people



Semi-automated operation

# Mobile emergency surgery – intensive care solutions



# Completed community housing projects

- Housed 40,000 Syrian refugees & IDPs in 7 purpose built refugee communities



Location: **Elbeyli, Kilis , Turkey**  
 Project duration: 4 months – complete  
 Project details: -1015 x 21m<sup>2</sup> homes WC & shower  
 - 2 x Schools 1250m<sup>2</sup>  
 - 4 x Clinic 300m<sup>2</sup>  
 - 2 x Mosque 300m<sup>2</sup>



Location: **Siccu, Syria**  
 Project duration: 4 months – 1<sup>st</sup> phase complete  
 Project details: 400 x 15m<sup>2</sup> Homes  
 - 600 x 17.5m<sup>2</sup> Homes 30 x School classrooms  
 - 2 x Mosque 220m<sup>2</sup>  
 - 2 x Clinic 120 m<sup>2</sup>  
 - Community centre + warehouse 120m<sup>2</sup>



Location: **Oncupinar, Kilis, Turkey**  
 Project duration: Phase 1 completed 3 months  
 - Details: 1089 x 30m<sup>2</sup> + 30m<sup>2</sup> double story units  
 - 2 x Market 200m<sup>2</sup>  
 - 2 x School 1000m<sup>2</sup> (2 Story)  
 - 2 x Mosque 300m<sup>2</sup>  
 - 2 x Training Center 300m<sup>2</sup>



Location: **Babusselam / Syria**  
 Housing: 1200 people  
 Project duration: 2 month – complete  
 Project details: 200 x 15m<sup>2</sup> Homes  
 16 x WC & Shower Units



Location: **Al Rayyan / Al Nur, Syria**  
 Project duration: 4 months  
 Project Includes:  
 - 1500 x 18 m<sup>2</sup> homes w/ solar panels / power  
 - WC & Shower Units  
 - 1 x Schools 1 x Clinic 2 x Mosque  
 - 2 x Market & admin facilities



Location **Semmarin / Syria**  
 Housing: 4,200 people  
 - 600 x 17.5m<sup>2</sup> Homes 30 x  
 - School classrooms  
 - 2 x Mosque 220m<sup>2</sup>  
 - 2 x Clinic 120 m<sup>2</sup>  
 - Community centre + warehouse 120m<sup>2</sup>

2015-16



BBC news: <https://www.bbc.com/news/av/world-europe-35537919/inside-the-kilis-camp-at-the-turkey-syria-border>

- Kilis, Turkey
- 1,089 double story 30m2 homes
- Funded by Kuwait Govt Charity
- School - clinic – mosque
- Training centre
- Market



Secured funds and built communities for....

**Kuwait:** UN Special Envoy, Dr Abdullah Al Matouq opens Kilis Elbeyli camp.



- Kilis was funded by Kuwait charities
- 1,015 home community
- Featured in New York Times.
- Schools, hospitals, mosques and Community facilities



Dr Abdullah Matouq cuts the red tape to open the community



➤ Our Kilis community is home to 6000+ and features schools, hospital, clinic, mosque and community facilities

Built communities for.....

# Qatar:



Qatar Charity social media post at Rayyan camp

- Completed a number of camps for Qatar charities.



Siccu community: 1,000 homes, schools, clinic, mosque, community facilities for 6,000 people. Opened July 2015.

Solar panels as not grid connected

Al Rayyan community. Home to 1,000 homes, clinic, mosque, community building, market, wash facilities for 6,000+ people.



17<sup>th</sup> September 2015.

19/9/15. Representative inspects progress at Al Rayyan camp.



Nur refugee community. 800 homes, mosque, community building, schools, wash facilities for 4,800+ people.



Completing 3 new communities – Al Rayyan, Nur and Iman communities featuring 2,500 homes.

- Al Rayyan Community
- 1000 homes, school, clinic, mosque, community sports and play facilities.

2015



- Al Rayyan Community
- 1000 homes, school, clinic, mosque, community sports and play facilities.



➤ Employed Syrian team to build their community



# Delivered projects for.... Saudi Relief Committee

Secured funding from Saudi Relief Committee to build 4 mobile bakeries in total. Delegation visited our facilities and projects to discuss upcoming projects. (August 2015)

Delegation visits Oncupinar refugee community  
April 2015



Inspect a recently completed kitchen/distribution community centre (seen below - right)



Warehouse, Kitchen &

- SRC initially commissioned 2 Mobile bakeries
- Each produce 1,600 breads per hour on the Syrian border.
- We improved the design and increased prodn to 3000 per hour for next two.



Operated by 2 people



Discussing upcoming project details:

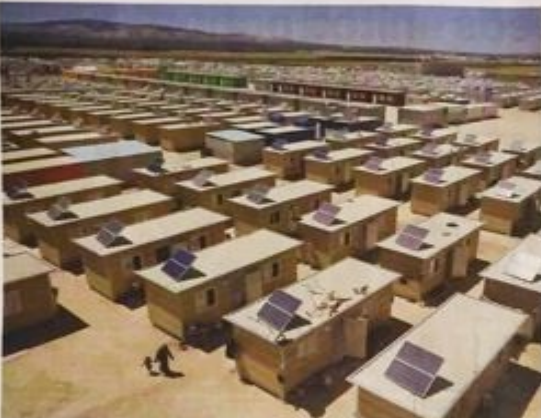


Factory tour – Izmir / Iskenduran



# Middle East press

## focus



Ben Long, top right, and Mete Ozbek, co-founders and partners of Modular and Mobile Solutions of International Humanitarian City in Dubai. The store, set up in Syria, has solar panels attached to each house in the camp, which can house 6,000 people. Business is extremely robust, built using the company's modular system. (Illustration: Peter Ho for The National)



# A helping hand amid it all

Britain Ben Long and Mete Ozbek from Turkey have proved that the private sector can make a difference in the refugee crisis by building entire communities for Syrians in a matter of months through their own company, writes Hareth Al Bustani

**D**uring times of crisis and disaster, most people turn to governments and humanitarian organisations. But one Dubai company is showing that the private sector can make a difference – by building entire communities for Syrian refugees in a matter of months through their own company. Britain Ben Long, 41, and Mete Ozbek, 53, from Turkey.

A year later, they set up in International Humanitarian City, already home to some 170 agencies and 50 NGOs. There, they were developing their first camp, which was already bustling. "We're doing things camp at the moment. We're building modular and mobile solutions for refugees and we're in 100 houses," says Long. "The company has also started land and support for a group in the Kurdistan region and there are 2 million refugees and internally displaced people and a group in Lebanon, the Eastern Ghazal with about 1.2 million people."

It is working on an orphanage project in the Turkish border with Syria, with 200 orphans. "The people who are living in these units are the people who are best educated, 'the best'," says Long. "They just don't have any other options, they had to go."

"We've also got mobile solar panels, we're collecting them and we're using them to power mobile phones. Adding the solar panels are the 8,000 and 10,000 people in Turkey, and the 300,000 people in Lebanon. We have 6,000 people and we're equipped with a wide range of commodities. At the moment, we're building a 10,000 people camp in the border of 100. Now, because the scale of the situation has become worse and the demand for housing has increased, we're doing whole camps," says Long.

"We're doing things camp at the moment. We're building modular and mobile solutions for refugees and we're in 100 houses," says Long. "The company has also started land and support for a group in the Kurdistan region and there are 2 million refugees and internally displaced people and a group in Lebanon, the Eastern Ghazal with about 1.2 million people."

It is working on an orphanage project in the Turkish border with Syria, with 200 orphans. "The people who are living in these units are the people who are best educated, 'the best'," says Long. "They just don't have any other options, they had to go."

**W**hen you go, it's very difficult to see people having to deal with that, so we set out to design and build the best refugee camps in the world. The people who have a better life and they are able to work and they are able to go to school and they are able to get a job and they are able to live a normal life. The people who have a better life and they are able to work and they are able to go to school and they are able to get a job and they are able to live a normal life.

"We're doing things camp at the moment. We're building modular and mobile solutions for refugees and we're in 100 houses," says Long. "The company has also started land and support for a group in the Kurdistan region and there are 2 million refugees and internally displaced people and a group in Lebanon, the Eastern Ghazal with about 1.2 million people."

It is working on an orphanage project in the Turkish border with Syria, with 200 orphans. "The people who are living in these units are the people who are best educated, 'the best'," says Long. "They just don't have any other options, they had to go."

# TheNational UAE

THURSDAY, NOVEMBER 19, 2015 | SAFAR 7, 1437

- UAE
- WORLD
- BUSINESS
- SPORT
- ARTS & LIFE
- OPINION
- B

- Courts
- Education
- Environment
- Health
- Heritage
- National Day
- Government
- Martyrs
- Scienc
- Transport



The sicca camp in Syria has solar panels attached to each house in the camp, which can house 6,000 people. Courtesy Modular & Mobile

# A helping hand amid it all

Hareth Al Bustani

November 4, 2015 Updated: November 8, 2015 12:19 PM



### Related



During times of crisis and disaster, most people turn to governments and humanitarian charities.

But one Dubai company is showing that the private sector can make a difference – by building entire communities for Syrian refugees in a matter of months.

Modular and Mobile has built miniature cities that include homes, healthcare centres, schools and even kitchens and mosques.

The company was conceived three years ago by Briton Ben Long, 41, and Mete Ozbek, 53, from Turkey.

A year later, they set up in International Humanitarian City, already home to nine UN agencies and 50 NGOs. There, they were developing their first

- Cut off by ISIL advance, residents stranded in Syria's Aleppo
- Barbara Massaad curates cookbook to help Syrian refugees


Children enrolled at school at a Modular & Mobile Solutions Community. (Illustration: Victoria A. Wilson)




- <http://7days.ae/dubai-firm-commissioned-to-build-shelter-for-syrian-refugees>
- <http://7days.ae/refugee-firm-driven-by-the-need-to-help>

# United Arab Emirates - Drive Dubai 103.8

<http://dubaieye1038.com/meet-the-men-who-have-given-a-home-to-more-than-40000-refugees-drive-live>


 LISTEN LIVE!


3-10  
OCT 2015

**CELEBRATING 25 YEARS**


SHOWS
NEWS
SPORTS
PODCASTS
BLOGS
FEATURES
WIN
CONTACT
APP
PHOTOS

**BREAKING NEWS** Facial recognition technology to boost security in UAE hotels



**MEET THE MEN WHO HAVE GIVEN A HOME TO MORE THAN 40,000 REFUGEES**

**#DRIVELIVE**



MEET THE MEN WHO HAVE GIVEN A HOME TO MORE THAN 40,000 REFUGEES!


Ben Long and Mete Ozbek moved to the UAE three years ago to realise their ambition in helping refugees and established a base at International Humanitarian City (IHC).

IHC was established in 2003 by His Highness Sheikh Mohammed Bin Rashid Al Maktoum, Vice President and Prime Minister of the UAE and Ruler of Dubai.

In the last two years, with the support of IHC, the people of the UAE and generous donations from the GCC region, Modular and Mobile Solutions for Life has provided housing for 40,000 refugees in 6,000+ modular homes in seven purpose-built modular communities.

And these are communities that feature schools, hospitals, mosques, markets, bakeries, wash facilities and provide access to power and water. Again a community...

These pictures are from one of Ben & Mete projects. They are currently moving families from tents into the homes you see on the attached.





**DUBAI EYE TWITTER**

-  @LucyT\_Travels @pttheadball and we all thought you were a budget traveller :-). Hope you're both good! 11 mins ago
-  Nightline is loving the ARN New Centre APPI CarTalk is next and what are we reading on the APP? Petrol prices... <http://t.co/3YkD187nz> 3 hours ago
-  The blood moon from last night is going viral. Look at this incredible photo taken in Glastonbury! #drivelive... <http://t.co/rfmrK53EPn> 4 hours ago
-  What's happening with these ants? Over 4 million people have watched this video that's going viral. Once the... <http://t.co/chhMojg5Vk> 5 hours ago
-  I posted a new photo to Facebook <http://t.co/v8K0hzABVU> 5 hours ago





When complete, the community will include 800 homes, community centre, school (15 classrooms), mosque, utility buildings, wash facilities. The camp is on the Turkish Syrian border.




Earlier this week Ben & Mete caught up with Drive Live's Tom Elliott and Alex Herold.



**DUBAI EYE TWITTER**

-  @LucyT\_Travels @pttheadball and we all thought you were a budget traveller :-). Hope you're both good! 11 mins ago
-  Nightline is loving the ARN New Centre APPI CarTalk is next and what are we reading on the APP? Petrol prices... <http://t.co/3YkD187nz> 3 hours ago
-  The blood moon from last night is going viral. Look at this incredible photo taken in Glastonbury! #drivelive... <http://t.co/rfmrK53EPn> 4 hours ago
-  What's happening with these ants? Over 4 million people have watched this video that's going viral. Once the... <http://t.co/chhMojg5Vk> 5 hours ago
-  I posted a new photo to Facebook <http://t.co/v8K0hzABVU> 5 hours ago






Ben Long and Mete Ozbek  
Dubai 103.8

The company were invited onto Drive Live radio show to discuss ongoing projects

News - UAE News - Refugee firm 'driven by the need to help'

NEVER MISS A STORY Enter your email to sign up to our daily newsletter **SUBSCRIBE**

## Refugee firm 'driven by the need to help'

Wafa Issa | September 23, 2015

Two businessmen who were driven to help refugees using a mobile bakery have now provided more than 6,000 homes for about 40,000 Syrians living in Turkey.

Ben Long and Mete Ozbek, who met on a farm in India and discovered that they shared a desire to help people in need, started the bakery two years ago, driving the 16m trailer along the Syria- Turkey border.

"Bakeries were being bombed in Syria so we asked what we could do," said Ozbek, a 53-year-old restaurateur.

The bakery commissioned by the Saudi Relief Committee produced 1,600 pieces of bread per hour and worked around the clock, requiring two people to operate.

But the pair wanted to do more, so they set up a housing company with a third partner, Ali Osman, in Dubai.

The company, called *Modular and Mobile Solutions*, provides pre-fabricated homes rather than tents for refugees, who are often exposed to the harsh winter conditions in the Levant.

**RELATED:** Dubai firm commissioned to build shelter for Syrian refugees



Refugees are hired to build their own homes



Some of the temporary homes feature two floors and balconies

"This did not start as a business idea but because we have a duty for this life," said Ozbek.

"It touched us. We thought if we can do this, we can do more and now we have more than 40,000 people housed."

He added: "In my mind, I cannot accept that kids have to face [poor refugee camp] conditions. "When you look at their faces, they have so many hopes."

<http://7days.ae/dubai-firm-commissioned-to-build-shelter-for-syrian-refugees>

UAE News - Dubai firm commissioned to build shelter for Syrian refugees

NEVER MISS A STORY Enter your email to sign up to our daily newsletter **SUBSCRIBE**

## Dubai firm commissioned to build shelter for Syrian refugees

Wafa Issa | September 23, 2015

A Dubai-based firm has been hired by the German government to build temporary homes for thousands of desperate refugees fleeing war-torn Syria.

Modular and Mobile Solutions is to house 2,000 people in the first phase, following the decision by Europe's biggest economy to take hundreds of thousands of people fleeing civil war in their homeland.



Refugee children housed in a community constructed by Dubai firm Modular and Mobile Solutions.

The International Humanitarian City-based firm currently constructs temporary communities on the Turkish-Syrian border, working with charities to rehouse those who have fled their homes. Modular and Mobile employs refugees to help construct the communities, with the latest site in Hamburg expected to be ready in two to three months.

Co-founder Ben Long said: "We don't want to just build a box, we want to provide a community feel. We want people to feel that they belong somewhere, even for a short period of time."

The communities typically include schools, a medical centre and a mosque.

The walls, roofs and furniture are transported flat-packed and constructed on site. Solar panels and generators provide electricity for the homes, which range from one floor or two and house up to six people in each.

wafa.issa@7days.ae

<http://7days.ae/refugee-firm-driven-by-the-need-to-help>

# President of European parliament, Martin Schulz

April 2015

President of European Parliament, Martin Schulz visits Oncupinar community, design, built band commissioned.



European delegation and Mr Schultz on upstairs balcony of our 2-story units.



- Official welcome



- Arrives at Oncupinar camp.



- Visits schools and meets children



- Inside double-story housing unit

# German Development Minister, Dr Gerd Muller visits our Oncupinar Camp

## Germany plans aid projects for Syrian refugees in Turkey, Lebanon

Germany is set to launch a series of projects in Turkey and Lebanon to help them cope with an influx of Syrian refugees. The two countries, which share borders with Syria, have borne the brunt of the refugee problem.



Development Minister Gerd Müller (pictured above, left) announced plans on Friday for the German government to set up its first [aid projects for Syrian refugees](#) in both Turkey and Lebanon.

Speaking following a meeting with the governor of Turkey's Kilis province, which borders on Syria, Müller said that his ministry would build numerous community centers in towns which have taken in particularly high numbers of refugees fleeing Syria's four-year-old conflict. Among other things, the aim of the community centers is to help reduce tensions between the refugees and local populations.



Dr. Müller arrives in Oncupinar with Major of Kilis Region.



Dr. Müller visits all schools and facilities



## Contact details:

### Ben Long

Tel: +44 7879 396276

Email: [ben@nowadays-group.com](mailto:ben@nowadays-group.com)

### Mete Ozbek

Tel: +971 50 627 8561

Email: [mete@nowadays-group.com](mailto:mete@nowadays-group.com)



International Humanitarian City, Dubai . [www.ihc.ae](http://www.ihc.ae)



Co-chaired IHC UN Roundtable with HRH Princess Haya, IHC CEO Giuseppe Saba, Head of UN Brindizi and Soha Ellaithy Head of Save The Children.



Part of delegation that met with Prince Charles & Lady Camilla on their visit to IHC. Nov 2016